

# 4 PARTRIDGE DR

SAN RAFAEL, CALIFORNIA

## PROPERTY SQ FT INFORMATION:

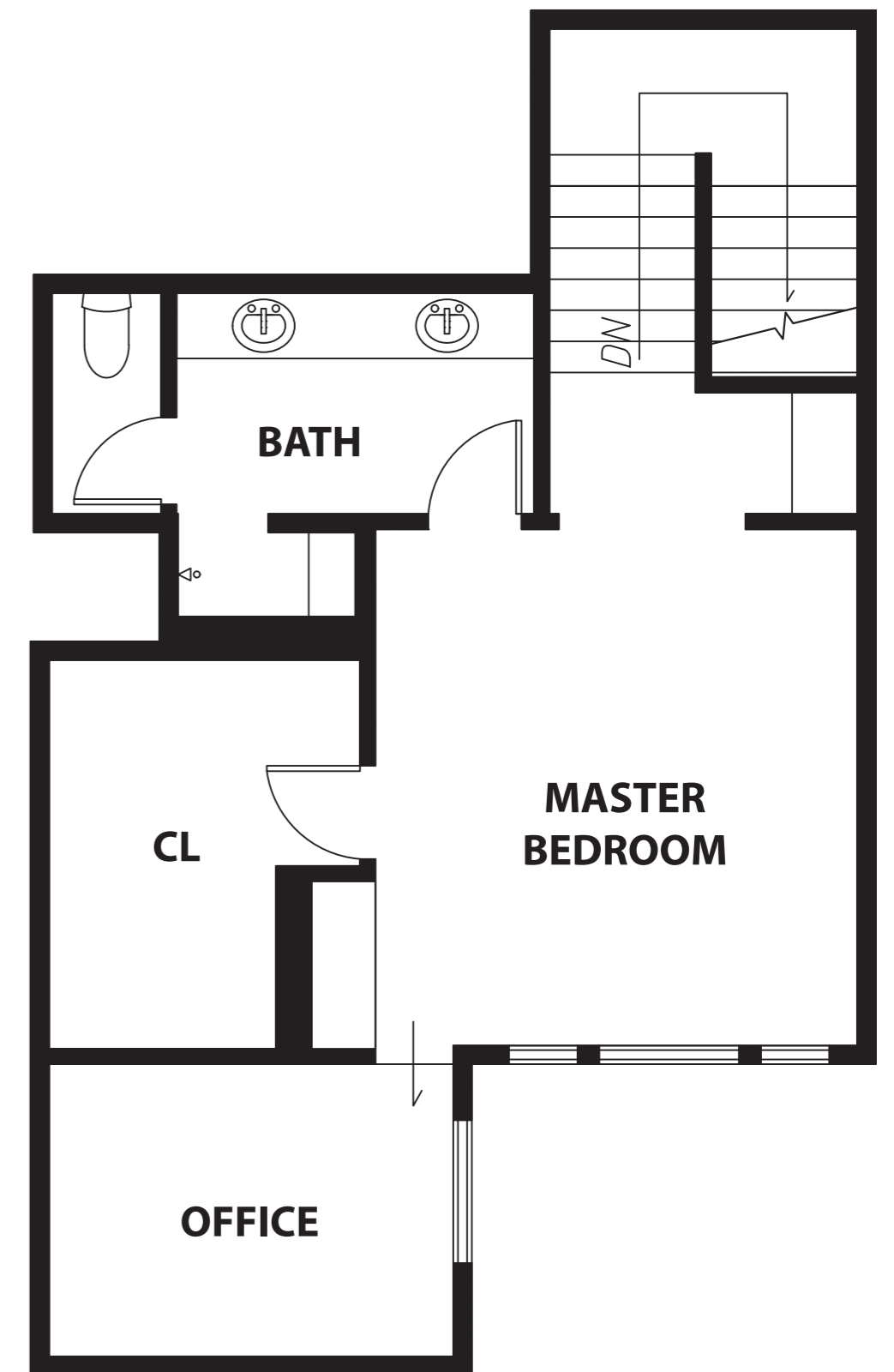
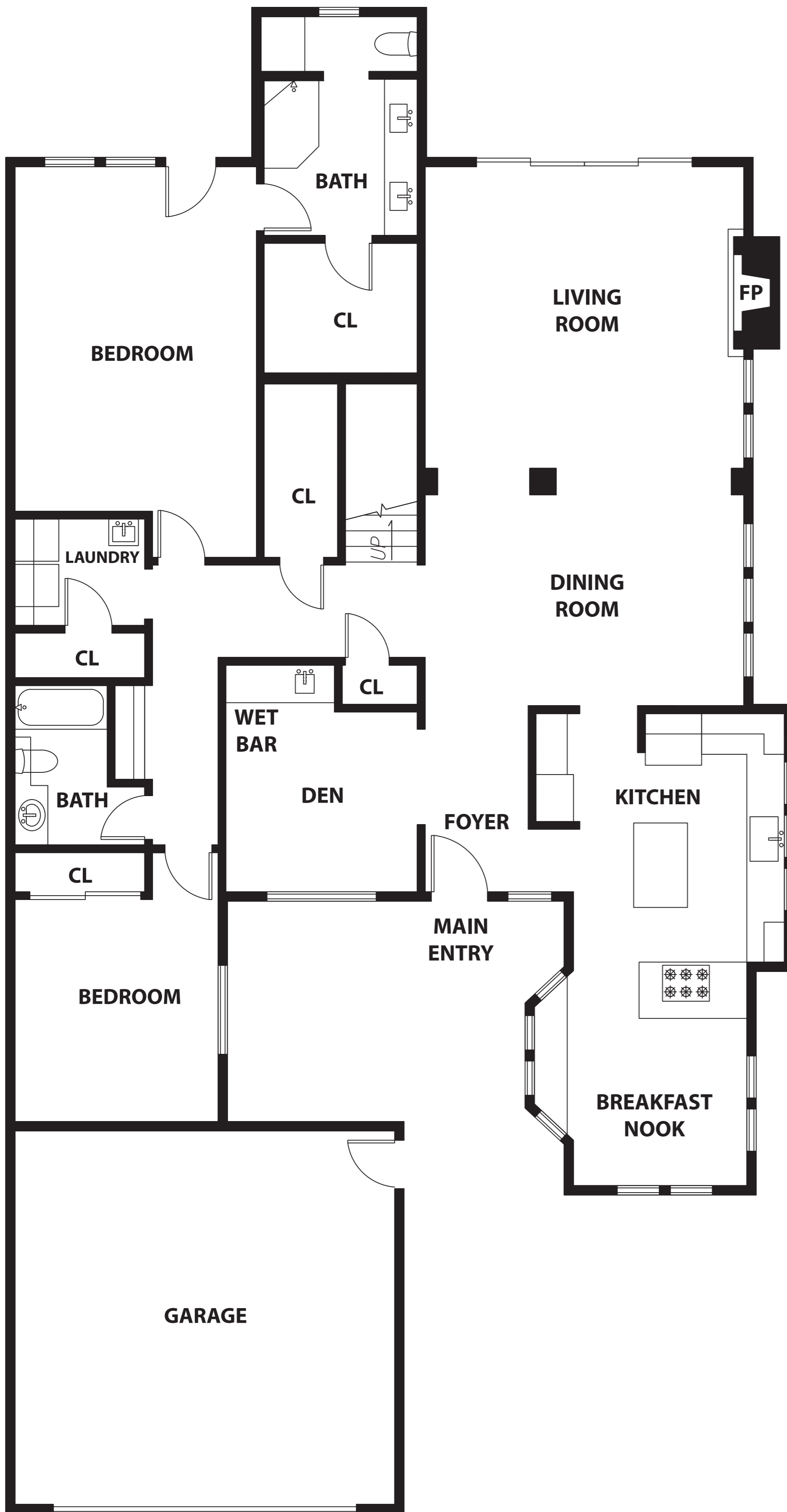
**LIVING SPACE\*: 2649 Sq Ft**

\*FIRST FLOOR: 2016 Sq Ft

\*SECOND FLOOR: 633 Sq Ft

**NON-LIVING SPACE (GARAGE): 439 Sq Ft**

**TOTAL COMBINED: 3088 Sq Ft**



SECOND FLOOR

RENDERING BY OPEN HOMES PHOTOGRAPHY  
ALL MEASUREMENTS ARE APPROXIMATE. WHILE DEEMED RELIABLE, NO INFORMATION  
ON THESE FLOOR PLANS SHOULD BE RELIED UPON WITHOUT INDEPENDENT VERIFICATION.

